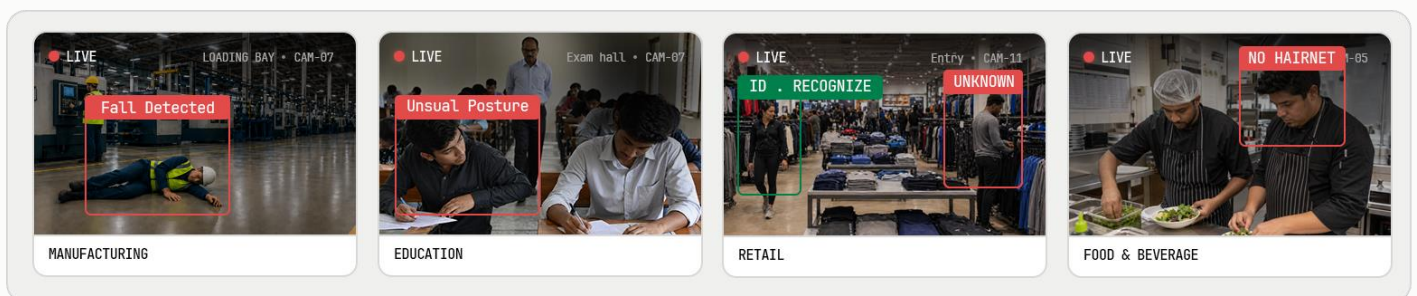


AI Vision Zones Workflows Reports

Turn every camera into an **operational sensor**.

Flowlinks is a unified AI vision platform that detects what matters — safety, security, compliance, operations — in real time across one store, one campus, or one plant. No rip-and-replace. Start with four cameras.



FOR

Retail · Education ·
Manufacturing · F&B
Hotels · Healthcare ·
Multi-family

DEPLOYMENT

AI-in-Camera · Edge
Inference · Central
GPU

STARTING FROM

4 Cameras, 1 site,
1 afternoon

OWNED BY

Your IT team – not a
third party.

CONTENTS

What's inside.

SECTIONS

01	Cover	01
02	Contents · Positioning	02
03	Problem · Why legacy CCTV stops short	03
04	Platform · The flowlinks layer model	04
05	Product · Screens that ship on day one	05
06	Deployment · Three architectures	06 - 07
07	Pricing · Tiers and what each includes	08
08	Roadmap · Pilot to platform in 12 months	09
09	Vertical · Retail	10
10	Vertical · Education	11
11	Vertical · Manufacturing	12
12	Vertical · Food & Beverage	13
13	Vertical · Hotels & Motels	14
14	Vertical · Healthcare	15
15	Vertical · Multi-family	16
16	Contact · Offices · Next steps	16

POSITIONING

Flowlinks is the AI vision layer for operators who were told they'd need to rip out their cameras.

We work with the cameras you already own. We run where it makes sense — inside the camera, on an edge box, or on a central GPU — and we present every event on the same clean dashboard regardless.

We were built for tier-2 operators who count every dollar, who own their IT, and who need one tool — not five — to run their business.

OUR AUDIENCE

Single-site and multi-site businesses in retail, education, manufacturing, hospitality, and residential — teams who want enterprise-grade AI vision **without enterprise-grade budgets.**

Why watching footage isn't enough anymore.

Most businesses already have cameras. What they don't have is a way to make those cameras *do* anything — flag a missing helmet, count the queue, alert on a back-door left open, pull a clip without calling the vendor. Here's how that shows up day to day.

TODAY — LEGACY CCTV

Reactive footage. Siloed systems. Vendor-locked.

- NVRs and cameras are reactive — you review after something went wrong.
- Remote guarding, access control and alarms don't talk to each other.
- Configuration sits with a vendor. Every rule change needs a ticket.
- No unified view across sites, cameras, and sensors.
- Every new location needs its own re-architecture.
- Networking and maintenance overhead never goes away.

WITH FLOWLINKS

Proactive AI defences. One dashboard. Fully IT-owned.

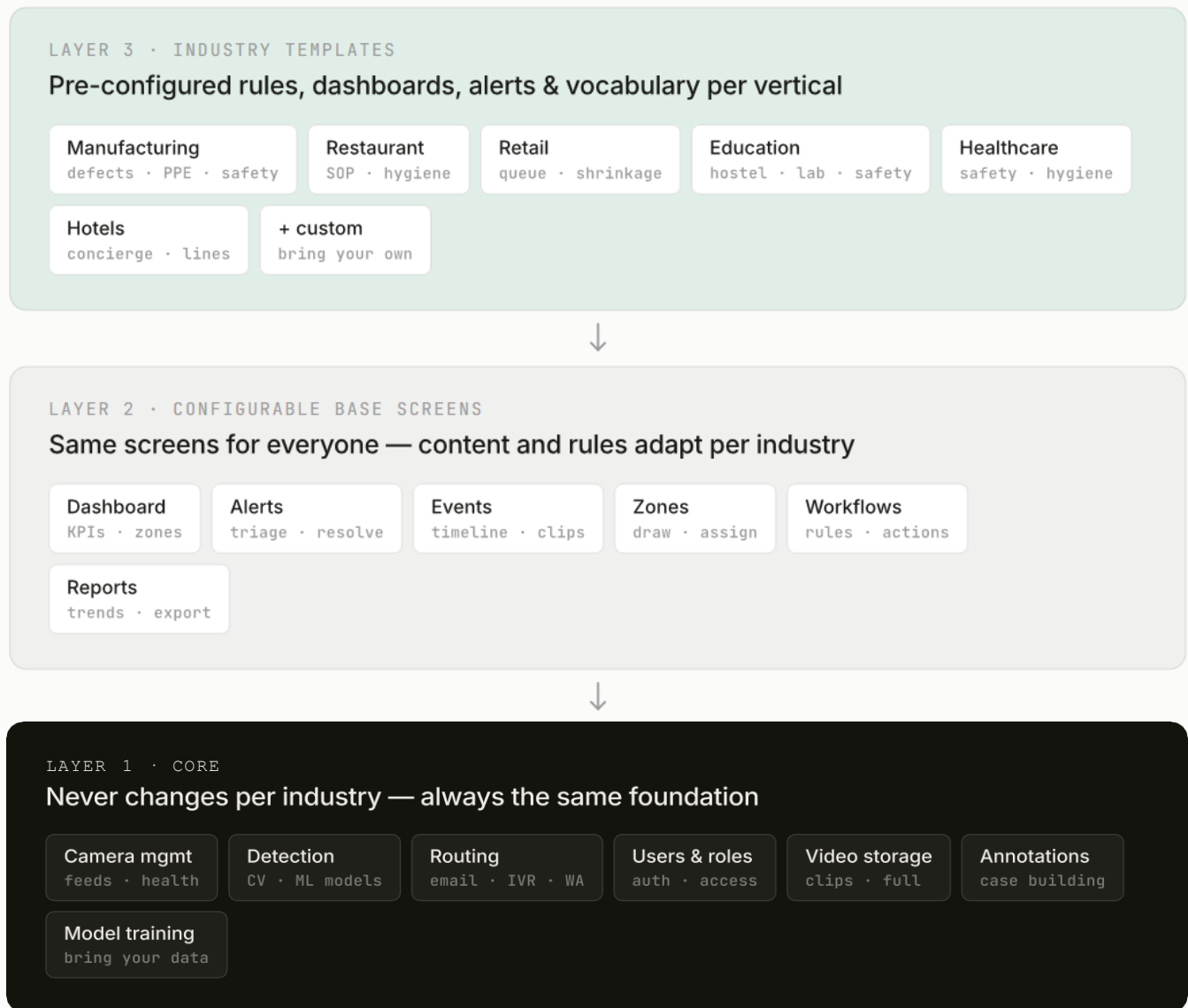
- AI detects events as they happen and routes them to the right person.
- Cameras, alarms, access control, sensors — all on one pane of glass.
- You own the policies. Tune sensitivity and rules in seconds.
- Instant notifications over WhatsApp, IVR, email, and the mobile app.
- Add sites without re-architecting. Every site joins the same fabric.
- Cloud or on-prem. 100% uptime. No third-party dependency.

“We stopped reviewing yesterday’s footage. Now we respond to what’s happening right now.”

Education

One codebase. Every industry.

You pick your industry at onboarding. Flowlinks reshapes itself around you — the dashboards, the rules, the terminology — but the foundation underneath never changes. One login. One URL. One product your team actually learns once.



one codebase · one login · one url · industry template selected at onboarding

§ 03 · PRODUCT

Screens that ship on **day one.**

pg 05 / 16

Six screens. Same for every customer. Every template — retail, manufacturing, schools — is just a different config.json over this surface. Nothing custom-built. Nothing to wait for.

ALERTS

3

ZONES

18

DASHBOARD

Dashboard · KPIs & zones

One glance, every site. Alerts, people on floor, events today, per-zone status.

Unauthorized entry

CAM-04 · 14:22

Queue > 6

CAM-12 · 14:18

PPE missing

CAM-09 · 14:10

Shift check-in

gate · 14:02

ALERTS

Alerts · triage & resolve

Color-coded by severity. Accept, snooze, escalate — or auto-route via WhatsApp / IVR.

REC

REC

REC

REC

EVENTS

Events · timeline & clips

Every detection, every camera, every site — searchable by person, vehicle, tag.

ZONES

Zones · draw & assign

Draw polygons on any frame. Assign rules — loitering, line crossing, restricted — per zone.

IF loitering > 30s

AND after-hours

THEN horn warning

AND WhatsApp manager

AND create case

WORKFLOWS

Workflows · rules & actions

If-this-then-that, visually. Escalation paths, auto-calls, horn-speaker warnings.

REPORTS

Reports · trends & export

Foot-traffic trends, SOP compliance, attendance. PDF, CSV, scheduled email.

ALSO AVAILABLE

Mobile app for iOS and Android — receive alerts, watch live feeds, arm/disarm sites, and acknowledge events on the go. Same workflows, same zones, same data.

Three architectures. Same product.

pg 06 / 16


Pick the architecture that fits your budget and footprint today. The software, the screens, the workflows stay identical — only *where the AI runs* changes. Mix and match across locations as you scale.

DIMENSION	01 · AI IN-CAMERA	02 · EDGE INFERENCE	03 · CENTRAL GPU
Upfront cost	Lowest	Medium	Highest
Reuse existing cameras	Replace only	Yes	Yes
Cameras supported per site	4 -10	10-40	40 +
On-site hardware	None	Edge box	GPU server
Bandwidth to cloud	Events only	Metadata only	Metadata or full video
Install time	Half a day	1- 2 days	2 - 5 days
Best fit	Small retail · single site	Mid-market · multi-camera	Campuses · plants · hotels

ARCH 01

AI inside the camera

no server · low bandwidth



The smallest possible footprint.

Each camera carries its own neural compute. Detection happens on the device. Only event metadata and short clips go to the cloud. No NVR, no GPU machine, no tower in the back room.

IDEAL CUSTOMER

A single-location retailer or office with 4-10 cameras who wants AI on day one — without buying hardware they'll fight with.

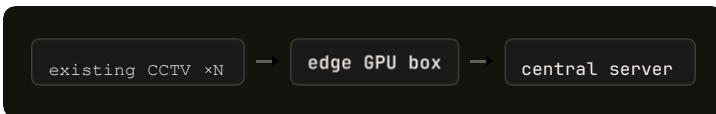
TYPICAL ROLLOUT

- Replace 4 - 10 cameras
- Half-day install
- Cloud dashboard live same day
- No recurring GPU costs

Edge and central GPU. For when you outgrow one box.

ARCH 02 Edge inference

metadata-only to cloud



One small edge device picks up the feed from your existing cameras, runs inference on-prem, and sends only event metadata to a central server. Your raw video never leaves the building unless you want it to.

IDEAL CUSTOMER

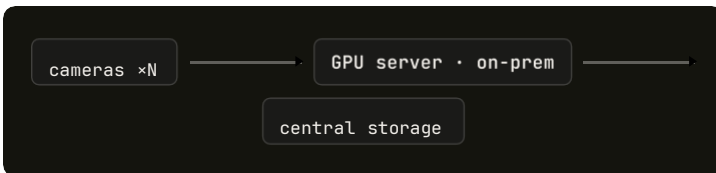
Mid-market operators with 10-40 cameras per site who've already invested in CCTV and want AI on top — without touching the cameras.

TYPICAL ROLLOUT

- Reuse existing cameras
- 1-2 day install per site
- Private video · public analytics
- Best price-to-performance

ARCH 03 Central GPU

all feeds to one GPU server



All cameras stream into one powerful on-prem GPU server. Highest model accuracy, centralized recording, and room to run custom-trained models on your own data. Same flowlinks dashboards sitting on top.

IDEAL CUSTOMER

Large campuses, factories and hotel chains with 40+ cameras that need highest-accuracy detection and centralized evidence storage.

TYPICAL ROLLOUT

- Rack-mounted GPU server
- 2-5 day install
- Highest detection accuracy
- Custom model training supported

MIX AND MATCH

Run **ARCH-01** in a small branch and **ARCH-03** at your flagship. One Flowlinks account, one set of workflows, one pane of glass. You don't need to commit.

Start small. Grow **only when you do.**

Pricing is camera-based and transparent. A one-time software cost per camera covers platform onboarding, configuration and setup. After that, a 7% annual maintenance fee keeps everything running — updates, support, cloud services, new detection models. **Hardware is quoted separately** — it depends on how your cameras are laid out and what network bandwidth you have.

STARTER

Per-camera

\$100 / cam · one-time

- Pay for exactly what you use
- All six base screens + mobile app
- WhatsApp / IVR / email alerting
- Standard detection library
- Email & chat support
- Ideal for small fleets that grow camera-by-camera

BEST WHEN YOU'RE ROLLING OUT ONE OR TWO CAMERAS AT A TIME

MOST PICKED

GROWTH

50-camera bundle

\$5,000 · one-time · volume rate

- Cover a full site in one commitment
- Same \$100 / cam — simpler procurement
- Multi-site ready · one dashboard
- All detection templates · custom zones
- Priority support · phone escalation
- Mix architectures — in-camera, edge or central

BEST FOR MULTI-CAMERA STORES, CAMPUSES, MID-SIZE PLANTS

ENTERPRISE

Custom quote

Volume & SLA · talk to us

- Unlimited cameras, unlimited sites
- Custom model training on your own data
- SSO · audit logs · fine-grained access
- 24/7 support · SLAs · named engineer
- Dedicated onboarding & training
- Private cloud or full on-prem

BEST FOR LARGE CHAINS, FACTORIES, HOTEL GROUPS

SOFTWARE

\$100 / cam one time, or **\$5,000** for 50 cameras. Platform, setup, onboarding - everything except the hardware.

ANNUAL MAINTENANCE

7% of the one time cost. Cover cloud, updates, new detection models, mobile releases, and support.

HARDWARE

Quoted separately, based on your site layout, bandwidth and chosen architecture. We'll help you size it right.

From one site to a platform in 12 months.

Flowlinks is designed for progressive rollout. Start with one location and a handful of cameras. Prove value. Expand camera by camera, site by site. No big-bang deployment, no rip-and-replace — every step compounds on the last.



One site. Four cameras. Live in a day.

We install AI-in-camera or an edge box at your busiest or riskiest site. Baseline dashboards and core alerts go live. Team gets first WhatsApp alerts the same week.

ARCH 01 or 02

Workflows match how your team actually works.

Zones, escalation paths, SOP rules and alert routing tuned to your SOPs. Training the team on the dashboard, the mobile app, and the weekly reports.

Zones · Workflows

Second and third sites join the same fabric.

Add sites without re-architecting. Same login, same screens, same rules — with per-site overrides. Monthly executive report across locations.

Multi-site

Flowlinks becomes your operational eye.

Custom detection models on your own footage. POS, access control, HR system integrations. Mobile app adoption across ops and security teams.

Custom models · integrations

WHAT SUCCESS LOOKS LIKE

80%+ of incidents surfaced by alerts, not by review. Mean response time under 2 minutes.

WHAT YOU DON'T NEED

A security operations centre. A data team. A vendor on retainer for rule changes.

WHAT YOU KEEP

Full ownership of your cameras, your data, your rules, your roadmap.

“We started with four cameras at one store. A year later we’re one every floor of every branch – same dashboard, zero re-architecture.”

Retail

VERTICAL · 01

Stop watching footage. Start seeing shoppers.

pg 10 / 16

For small and mid-sized retailers, flowlinks turns the cameras you already own into a live operations layer — heatmaps that show where shoppers actually linger, alerts when back doors stay open, and instant notifications when a known shoplifter walks in again.

01

Foot traffic & heatmaps

High- and low-traffic zones on the floor plan. Reposition displays where they earn.

02

After-hours deterrence

Trespass, loitering and back-door alerts with AI voice warnings over horn speakers.

03

Returning-person alerts

Get notified the moment a flagged individual enters any of your stores.

04

Custom visual search

"Brown jacket, last hour, any store" — and flowlinks finds the clip.

05

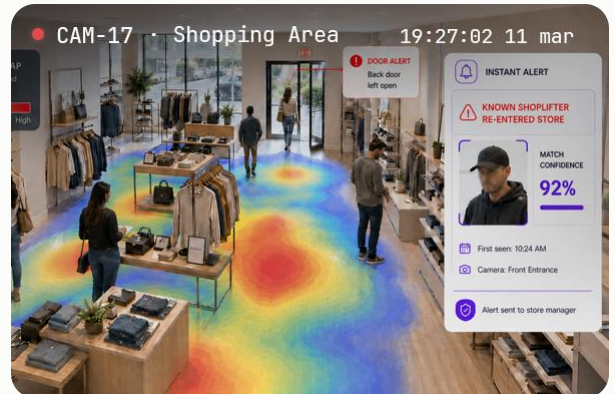
POS + camera link

Every transaction tied to its camera feed. One click from receipt to moment.

06

Multi-store, one pane

Monitor and arm/disarm any location from one dashboard or the mobile app.



TYPICAL ROLLOUT

1 store · 6 cameras · 1 edge box · live in a day. Expand by adding cameras, not architecture.

INTEGRATIONS

POS systems · access control · WhatsApp / IVR / email · law-enforcement floor-plan sharing

“We replaced three vendors – cameras, alarms, remote guarding – with flowlinks. Our managers actually use it now.”

Retail

VERTICAL · 02

Safer campuses. Without turning them into airports.

pg 11 / 16

For **schools, colleges and hostels**, flowlinks runs unattended in the background — watching perimeters, flagging unknown faces in restricted zones, tracking attendance at gates, and sharing a live floor plan with law enforcement the moment an incident starts.

01

Staff & student attendance

Face-recognition check-in at gates. Exports to your HR / SIS.

02

Unknown-person restriction

Flag anyone without a matching face entering hostels, labs, staff zones.

03

Fire & fight detection

Instant alerts for fire, smoke, altercations. Auto-escalation to admin.

04

Parking & vehicle ANPR

Number-plate recognition for student, staff and visitor vehicles.

05

Canteen SOP audits

Hairnets, gloves, cleaning schedules — verified by AI, not inspections.

06

Live floor-plan sharing

During an incident, share a live map of camera sightings with police.



TYPICAL ROLLOUT

Campus · 20 cameras · edge device + central GPU blend. Phase 1: gates & perimeter. Phase 2: hostels & labs.

INTEGRATIONS

Student Information Systems · HR · access control · ANPR · WhatsApp for parents

“We went from “check the footage tomorrow” to “know within ten seconds.” That changes how parents trust us.”

Education

The floor that watches itself.

For **mid-size plants and factories**, flowlinks keeps eyes on every line, every forklift, every loading bay — catching missing PPE before an inspector does, tracing material movement zone-to-zone, and flagging process deviations before they become defects.

01

Missing PPE detection

Helmets, vests, gloves, hairnets — flagged in real time with horn warnings.

02

Inter-zone movement tracking

Raw material → production → packaging → warehouse — audit trails automatically.

03

Forklift & driving safety

Unsafe driving, speeding, blind-spot violations, near-miss detection.

04

Loading bay oversight

Box counts, truck dwell time, damage documentation at arrival and dispatch.

05

Process & defect analytics

Spot-check sanitation, testing protocols, station timings. Root-cause defects.

06

Perimeter & access control

Line-crossing, after-hours, auto-deny lists. Door opening by face.



TYPICAL ROLLOUT

Single plant · 40 cameras · central GPU server.
Phase 1: safety & PPE. Phase 2: productivity & defects.

INTEGRATIONS

ERP / MES · access control · horn speakers · WhatsApp escalation · SAP EHS

“PPE compliance went from 72% to 96% in six weeks. Nobody argues with a horn speaker that knows your name.”

Manufacturing

VERTICAL · 04

Every outlet. Running the same SOP.

pg 13 / 16

For restaurants, **QSRs and cloud kitchens**, flowlinks audits hygiene, checklist compliance and customer experience automatically — hairnet detection, table cleaning, trash overflow, queue times, opening and closing checklists — so managers stop being inspectors and start being operators.

01

Hygiene & SOP audits

Hairnets, gloves, clean tables, working microwaves, pest detection.

02

Queue & wait-time tracking

Headcount at counter, time-in-line, table-to-delivery latency.

03

Opening & closing checklists

AI confirms every item on the checklist was actually done, on camera.

04

Cash register protocols

Voids, drawer-open, customer-cashier interaction anomalies.

05

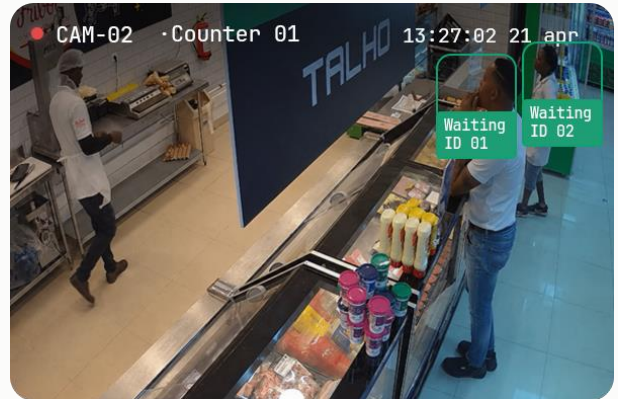
Signage & branding compliance

Menu screens on, signage intact, staff in uniform across every location.

06

Peak / off-peak patterns

Heatmaps of footfall by hour and day. Staff and stock to demand.



TYPICAL ROLLOUT

Outlet · 4-6 cameras · AI in-camera. Scales to chain with one dashboard across every store.

INTEGRATIONS

POS · delivery platforms · HR rostering · WhatsApp for shift managers

“We used to rely on surprise audits. Now every shift is audited, gently, without anyone feeling watched.”

Food & Beverage

Guests don't see it. Staff don't miss **anything.**

For **hotels and motels**, flowlinks quietly measures concierge wait times, tracks guest journeys across cameras for investigations, detects slips and falls, and gives front-desk staff a one-button panic line to internal security or the police.

01

Concierge & check-in queues

Average wait time per hour. Auto-page back-office when it exceeds threshold.

02

Guest journey across cameras

Trace a person across floors, doors and cameras — faster investigations.

03

Slip & fall auto-archive

Automatic evidence preservation for insurance and liability claims.

04

Occupancy trends

Footfall in lobby, restaurant, spa. Staff to actual demand.

05

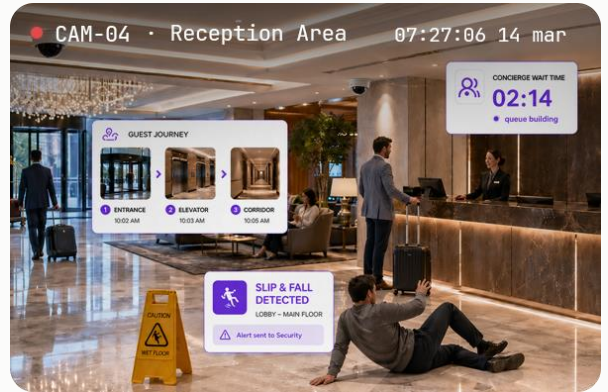
One-touch security button

Staff dispatch internal security or trigger a police call from the dashboard.

06

Perimeter & back-of-house

After-hours loitering, service-lift misuse, unauthorized zones.



TYPICAL ROLLOUT

Property · 25 cameras · edge device. Phase 1: lobby & perimeter. Phase 2: BoH & corridors.

INTEGRATIONS

PMS · access control · housekeeping · WhatsApp for front-desk

“The insurance claim that used to take weeks of footage review now takes minutes. The clip is already attached.”

Hotels & Motels

Care teams first. Cameras in support.

For **clinics, small hospitals and senior-care facilities**, flowlinks watches where staff can't be — waiting-room queues, medication-room access, fall-risk corridors, after-hours entrances — without turning patient areas into surveillance zones.

01

Medication-room access

Face-verified entry. Log + clip for every open. Audit-ready for compliance.

02

Waiting-room queue insights

Headcount, wait time, no-show patterns. Staff the front desk to demand.

03

Fall-risk detection

Posture detection in corridors and wards. Page the nearest nurse.

04

Hand-hygiene audits

Sanitation station usage at entry to wards and procedure rooms.

05

Visitor management

Auto-deny lists. Escort tracking. After-hours access tracking.

06

Perimeter & parking

After-hours trespass, ambulance-bay monitoring, vehicle ANPR.



TYPICAL ROLLOUT

Facility · 15 cameras · edge device. Phase 1: restricted rooms & entrances. Phase 2: wards & corridors.

INTEGRATIONS

EMR / HIS · access control · nurse-call · WhatsApp for on-call physicians

“It respects our patients. The camera is quite – flowlinks only speaks up when something actually needs a human.”

Healthcare

VERTICAL · 07

Residents protected. Managers **off their phones.**

pg 16 / 16

For **multi-family residential** — apartment buildings, gated communities, senior living — flowlinks turns lobby and perimeter cameras into a staffed concierge layer. Visitor logs, mailroom protection, slip-and-fall evidence, custom sign-in flows — all without adding headcount.

01

Visitor & contractor logs

Custom sign-in flows. Track visitor paths across cameras. Remote-unlock doors.

02

Package & mailroom safety

Theft detection at mail rooms. Native camera + lock integration.

03

Slip-and-fall evidence

Auto-archive clips. AI-drafted incident summaries. PDF-ready reports.

04

Vehicle & plate alerts

Real-time alerts for people and vehicles of interest across properties.

05

AI-unified timeline

Reconstruct incidents across cameras as a single timeline. Minutes, not hours.

06

Evidence & audit sharing

Permissioned sharing with insurers, legal and law enforcement.



TYPICAL ROLLOUT

Property · 12 cameras · AI in-camera or edge box. Phase 1: lobby & mailroom. Phase 2: parking & amenities.

INTEGRATIONS

Property management · access control · smart locks
· WhatsApp for building managers.

“Residents feel seen, not watched. And when something does happen, we have evidence ready to share.”

Multi-Family

§ 17 · LET'S TALK

Four cameras, one afternoon. That's all it takes to start.

Book a thirty-minute walkthrough. Show us your site, share your goals. We'll scope a pilot you can run next month — no commitment, no rip-and-replace.

NEW JERSEY, USA

3840 Park Avenue, STE C-205
Edison, NJ 08820

+1 551 358 2076

DUBAI, UAE

Unit 107-0140, OF 107
Dubai Investment Park First

+971 50 780 4640

NOIDA, INDIA

B-21 & B-93, Sector 67 Noida
201301, Uttar Pradesh

+91 989 994 1672

GET IN TOUCH

info@flowlinks.ai

OnLine

flowlinks.ai



flowlinks.ai

AI vision for operators · 2026